



## *Fibre Interconnect Solutions*

As well as Volition™ Network Solutions, 3M™ offers a complete line of singlemode & multimode ferruled fibre optic connectors including Hot Melt and Crimplok™ connectors in ST and SC style. To complement this, connectors are also available terminated as pigtails or patch cords in a variety of lengths.

There is also an extensive range of mounting hardware & accessories including 19" patch panels and distribution boxes. The Fibrlok™ mechanical splice, available in single & multifibre versions for single & multimode fibre completes the offering from Fibre Interconnect Solutions.



# 02





# Content

## Fibre Interconnect Solutions

### 2. Fibre Interconnect Solutions

### Page

#### 2.1 Couplings, Connectors, Pigtails

|       |        |         |
|-------|--------|---------|
| 2.1.1 | 3M™ ST | 76 - 77 |
| 2.1.2 | 3M™ SC | 78 - 80 |
| 2.1.3 | 3M™ FC | 81 - 82 |
| 2.1.4 | E2000  | 83      |

#### 2.2 Assembly systems

|       |              |         |
|-------|--------------|---------|
| 2.2.1 | 3M™ Hot Melt | 84 - 87 |
| 2.2.2 | Crimplok™    | 88      |
| 2.2.3 | Fibrlok™     | 89 - 93 |

#### 2.3 Cable assemblies

|       |                             |         |
|-------|-----------------------------|---------|
| 2.3.1 | 3M™ Multimode Patch Cables  | 94 - 97 |
| 2.3.2 | 3M™ Singlemode Patch Cables | 98 - 99 |

#### 2.4 Accessories

|       |   |     |
|-------|---|-----|
| 2.4.1 | 3M™ Loose Tube Dividers                 | 100 |
| 2.4.2 | 3M™ DIN Splicing Cassettes              | 101 |
| 2.4.3 | 3M™ Splice Protectors, Holders and Caps | 102 |

#### 2.5 Subracks

|       |                                     |           |
|-------|-------------------------------------|-----------|
| 2.5.1 | 3M™ BCCO II 19"                     | 103 - 105 |
| 2.5.2 | 3M™ BCCO II ETSI                    | 106 - 107 |
| 2.5.3 | 3M™ 19" Splice Tray, Extendable, 1U | 108       |

#### 2.6 Distribution Boxes

|       |                            |     |
|-------|----------------------------|-----|
| 2.6.1 | 3M™ VKA 2/GF               | 109 |
| 2.6.2 | 3M™ VKA 2/GF-EFM           | 110 |
| 2.6.3 | 3M™ VKA 4/GF, 3M™ VKA 8/GF | 111 |
| 2.6.4 | 3M™ Box 2552SA             | 112 |

#### 2.7 Terminal Outlet

|       |                             |     |
|-------|-----------------------------|-----|
| 2.7.1 | 3M™ Fibre Optic Wall Outlet | 113 |
|-------|-----------------------------|-----|



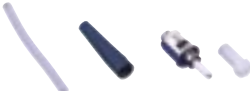



## 2.1 Couplings, Connectors, Pigtails

### 2.1.1 3M™ ST

#### Type/Order text

#### Ref.-No.

#### 3M™ ST Connectors

|   |  |                                  |
|---|--|----------------------------------|
|    | <b>ST connector - Hot Melt - multimode</b><br><b>White boot</b><br>Packaging: 60 units per box<br>Packaging: 1000 units (bulk) | <b>6100-W</b><br><b>6100-W1K</b> |
|   | <b>Black boot</b><br>Packaging: 60 units per box<br>Packaging: 1000 units (bulk)   | <b>6100-B</b><br><b>6100-B1K</b> |
|   | <b>Red boot</b><br>Packaging: 60 units per box<br>Packaging: 1000 units (bulk)   | <b>6100-R</b><br><b>6100-R1K</b> |
|    | <b>ST connector - Hot Melt - singlemode</b><br><b>Yellow boot</b><br>Packaging: 60 units per box                               | <b>8100-YS</b>                   |
|   | <b>ST connector - Epoxy - multimode</b><br><b>Black boot</b><br>Packaging: 60 units per box<br>Packaging: 1000 units (bulk)    | <b>6105-B</b><br><b>6105-B1K</b> |
|   | <b>Red boot</b><br>Packaging: 60 units per box   | <b>6105-R</b>                    |
|  | <b>ST connector Epoxy - singlemode</b><br><b>Yellow boot</b><br>Packaging: 60 units per box                                    | <b>8106</b>                      |
|   | <b>Blue boot</b><br>Packaging: 60 units per box  | <b>AAMUL3</b>                    |
|  | <b>ST connector - Crimplok - multimode</b><br><b>Grey boot</b><br>Packaging: 60 units per box                                  | <b>6901</b>                      |
|  | <b>ST connector - Crimplok - singlemode</b><br><b>Blue Boot</b><br>Packaging: 60 units per box                                 | <b>8901</b>                      |

| Connector type               | 6100                | 6105                | 6901                | 8100           | 8106           | 8901          |
|------------------------------|---------------------|---------------------|---------------------|----------------|----------------|---------------|
| <b>Adhesive type</b>         | Hot Melt            | Epoxy               | Crimplok            | Hot melt       | Epoxy          | Crimplok      |
| <b>Fibre Type</b>            | 50/125,<br>62.5/125 | 50/125,<br>62.5/125 | 50/125,<br>62.5/125 | 9/125          | 9/125          | 9/125         |
| <b>Insertion loss</b>        | < 0.15 dB typ.      | < 0.15 dB typ.      | < 0.2 dB typ.       | < 0.15 dB typ. | < 0.15 dB typ. | <0.2dB        |
| <b>Return loss</b>           | ≥ 25 dB typ.        | ≥ 25 dB typ.        | > 40 dB typ.        | > 45 dB typ.   | > 45 dB typ.   | >= 40 dB typ  |
| <b>Ferrule</b>               | Ceramic             | Ceramic             | Ceramic             | Ceramic        | Ceramic        | Ceramic       |
| <b>Housing / Body</b>        | Metal               | Metal               | Plastic             | Metal          | Metal          | Plastic       |
| <b>Operating temperature</b> | -40°C to 80°C       | -40°C to 80°C       | -10°C to 60°C       | -40°C to 80°C  | -40°C to 80°C  | -10°C to 60°C |
| <b>Storage temperature</b>   | -40°C to 85°C       | -40°C to 85°C       | -40°C to 80°C       | -40°C to 85°C  | -40°C to 85°C  | -40°C to 80°C |

## 2.1 Couplings, Connectors, Pigtails

### 2.1.1 3M™ ST

#### Type/Order text

#### Ref.-No.

#### 3M™ ST Coupling



##### ST Coupling 6112

for D hole mounting, spacer and union nut included

Packaging: 60 units

Packaging: 1000 units

6112

6112-1K

##### ST Coupling 7441

for D hole mounting, spacer and union nut included

Packaging: 100 units

7441



##### ST/SC Hybrid Coupling - multimode

Duplex. Metal housing, mounting springs included

Packaging: 50 units

6114EM

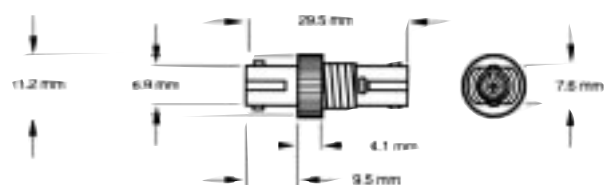
##### ST/SC Hybrid Coupling, singlemode

Duplex. Metal housing, mounting springs included

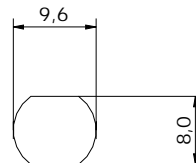
Packaging: 50 units per box

6114-ES

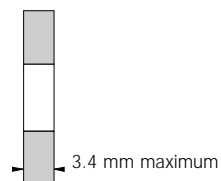
#### ST Coupling



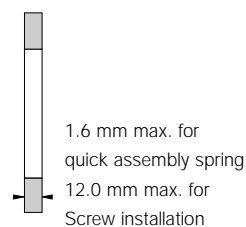
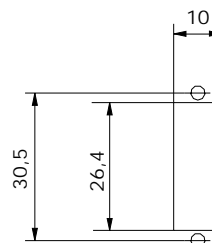
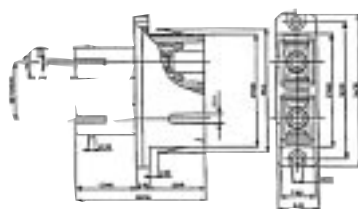
#### Hole pattern



#### Sheet thickness



#### ST/SC hybrid Coupling



| Coupling type         | 6112            | 7441             | ST/SC-hybrid c. MM |
|-----------------------|-----------------|------------------|--------------------|
| Type                  | Multimode       | Singlemode       | Multimode          |
| Sleeve                | Phosphor bronze | Zirconia ceramic | Phosphor bronze    |
| Housing               | Metal           | Metal            | Metal              |
| Operating temperature | -40°C to 85°C   | -40°C to 85°C    | -40°C to 85°C      |

#### Type/Order text

#### Ref.-No.

#### 3M™ ST Pigtails



##### ST Pigtail 50/125, multimode Fibre

Length: 2 m, PU: 12

BAN00-ZK0002

##### ST Pigtail 62.5/125, multimode Fibre

Length: 2 m, PU: 12

BNA00-AP0002

##### ST Pigtail 9/125, singlemode Fibre

Length: 2 m, PU: 12

AAM00-AU0002

## 2.1 Couplings, Connectors, Pigtails

### 2.1.2 3M™ SC

#### Type/Order text

#### Ref.-No.

#### 3M™ SC Connectors



##### SC Connector - Hot Melt - multimode

##### White boot

Packaging: 60 units

6300-W

Packaging: 1000 units (bulk)

6300-W1K

Packaging: 60 units (bulk)

6300-W5-12

##### Black boot

Packaging: 1000 units (bulk)

6300-B1K

##### SC Connector - Hot Melt - singlemode

##### White boot

Packaging: 60 units per box

8300

##### SC Connector - Epoxy - multimode

##### Beige boot

Packaging: 60 units

6306-BE

Packaging: 1000 units (bulk)

6306-BE1K



##### SC Connector - Epoxy - singlemode

##### White boot

Packaging: 60 units per box

8306

Packaging: 1000 units (bulk)

ADAWL3

##### SC APC Connector - Epoxy - singlemode

##### Green boot

Packaging: 1000 units (bulk)

AEPGL-3



##### SC Connector - Crimplok - multimode

##### Black boot

Packaging: 60 units

6900



##### SC Connector - Crimplok - singlemode

##### Blue Boot

Packaging: 60 units per box

8900



##### Duplex Clip for SC Connector

Packaging: 500 units per pack

3601-E



| SC Connector              | 6300                | 6306                | 8300          | 8306          | AEPGL-3       | 6900                | 8900          |
|---------------------------|---------------------|---------------------|---------------|---------------|---------------|---------------------|---------------|
| Adhesive type             | Hot Melt            | Epoxy               | Hot Melt      | Epoxy         | Epoxy         | Crimplok            | Crimplok      |
| Fibre Type                | 50/125,<br>62.5/125 | 50/125,<br>62.5/125 | 9/125         | 9/125         | 9/125         | 50/125,<br>62.5/125 | 9/125         |
| Insertion loss in dB typ. | < 0.15              | < 0.15              | < 0.15        | < 0.15        | < 0.15        | < 0.2               | <0.2dB        |
| Return loss in dB typ.    | > 25                | > 25                | > 40          | > 45          | > 70          | > 27                | >= 40         |
| Ferrule                   | Zirc. ceramic       | Zirc. ceramic       | Zirc. ceramic | Zirc. ceramic | Zirc. ceramic | Zirc. ceramic       | Zirc. ceramic |
| Housing / Body            | Plastic             | Plastic             | Plastic       | Plastic       | Plastic       | Plastic             | Plastic       |
| Operating temp. in °C     | -40 to 80           | -40 to 85           | -40 to 80     | -40 to 80     | -40 to 80     | -10 to 60           | -10 to 60     |
| Storage temp. in °C       | -40 to 85           | -40 to 80           | -40 to 85     | -40 to 85     | -40 to 85     | -40 to 80           | -40 to 80     |

## 2.1 Couplings, Connectors, Pigtails

### 2.1.2 3M™ SC

#### Type/Order text

#### Ref.-No.

#### 3M™ SC Coupling



##### SC Duplex Coupling, multimode

Plastic housing, grey,  
mounting bracket included  
Packaging: 50 units per box

6313



##### SC Duplex Coupling, multimode

Metal housing  
mounting bracket included  
Packaging: 6 units per box

6313-M

##### SC Duplex Coupling, singlemode

Metal housing  
mounting bracket included  
Packaging: 50 units per box

8313

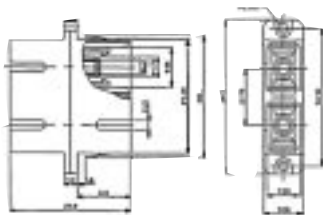


##### ST/SC Hybrid Duplex Coupling 6114, multimode

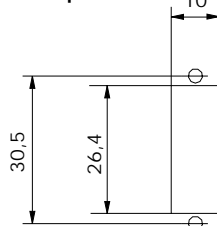
Duplex. Metal housing, mounting springs included  
Packaging: 50 units per box

6114-EM

#### SC duplex coupling



#### Hole pattern

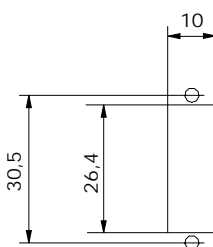
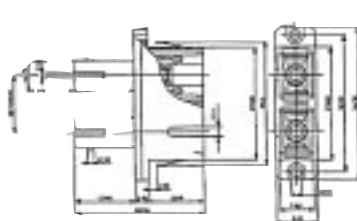


#### Sheet thickness



1.6 mm max. for  
quick assembly spring  
12.0 mm max. for  
Screw installation

#### ST/SC hybrid coupling



1.6 mm max. for  
quick assembly spring  
12.0 mm max. for  
Screw installation

| Coupling type   | 6313            | 6313 M          | 8313             | 6114-EM         |
|-----------------|-----------------|-----------------|------------------|-----------------|
| Type            | Multimode       | Multimode       | Singlemode       | Multimode       |
| Simplex/Duplex  | for duplex      | for duplex      | for duplex       | for duplex      |
| Sleeve          | Phosphor bronze | Phosphor bronze | Zirconia ceramic | Phosphor bronze |
| Housing         | Plastic, blue   | Metal           | Metal            | Metal           |
| Operating temp. | -40°C to 75°C   | -40°C to 85°C   | -40°C to 85°C    | -40°C to 85°C   |



## 2.1 Couplings, Connectors, Pigtails

### 2.1.2 3M™ SC

#### Type/Order text

#### Ref.-No.

#### 3M™ SC Simplex Coupling



##### SC Coupling, multimode

Simplex, grey, mounting springs included

6310

Packaging: 60 units



##### SC Coupling, singlemode

Simplex, blue, mounting springs included

8310

Packaging: 60 units

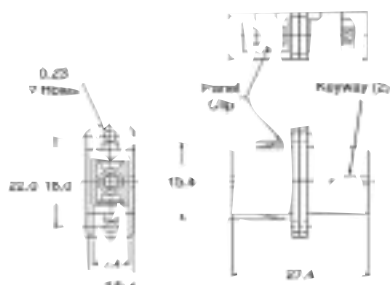


##### SC APC Coupling, singlemode

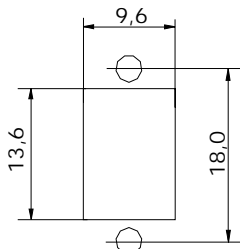
Simplex, green, mounting springs included

8310-G

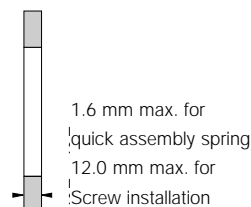
Packaging: 60 units



#### Hole pattern



#### Sheet thickness



| Connector type        | 6310             | 8310             | 8310 G           |
|-----------------------|------------------|------------------|------------------|
| Type                  | Multimode        | Singlemode       | Singlemode       |
| Sleeve                | Zirconia ceramic | Zirconia ceramic | Zirconia ceramic |
| Housing               | Plastic, grey    | Plastic, blue    | Plastic, green   |
| Operating temperature | -40°C to 85°C    | -40°C to 85°C    | -40°C to 85°C    |

#### Type/Order text

#### Ref.-No.

#### 3M™ SC Pigtails

##### SC Pigtail 50/125, multimode Fibre

Length: 2 m, PU: 12

BDB00-ZK0002



##### SC Pigtail 62.5/125, singlemode Fibre

Length: 2 m, PU: 12

BDB00-AP0002



##### SC Pigtail 9/125, singlemode Fibre

Length: 2 m, PU: 12 units

ADA00-AU0002



##### SC APC 8° Pigtail 9/125, singlemode Fibre

Length: 2 m, PU: 12 units

ADE00-AU0002

##### SC APC 9° Pigtail 9/125, singlemode Fibre

Length: 2 m, PU: 12 units

ABP00-AU0002

## 2.1 Couplings, Connectors, Pigtails

### 2.1.3 3M™ FC

#### Type/Order text

#### Ref.-No.

#### 3M™ FC Connector



##### FC Connector -Hot Melt - multimode

##### White boot

Packaging: 60 units per box

6200



##### FC Connector -Epoxy -multimode

##### Beige boot

Packaging: 60 units per box

6202

##### FC Connector -Epoxy -singlemode

##### White boot

Packaging: 60 units per box

8203

Packaging: 1000 units bulk

AENWL-3



##### FC APC Connector - Epoxy - singlemode

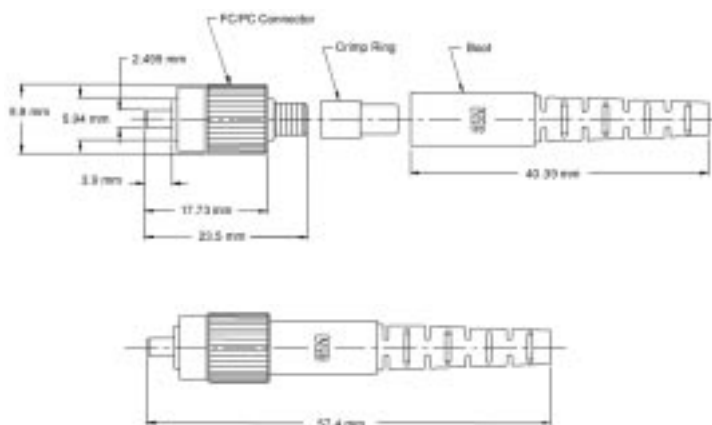
##### Green boot

Packaging: 60 units per box

8206-FC/APC

Packaging: 1000 units, bulk

AEXGL-3



| Connector type        | 6200                   | 6202                   | 8203                   | 8206-FC/APC      |
|-----------------------|------------------------|------------------------|------------------------|------------------|
| Adhesive type         | Hot Melt               | Epoxy                  | Epoxy                  | Epoxy            |
| Fibre Type            | 50/125, 62.5/125       | 50/125, 62.5/125       | 9/125                  | 9/125            |
| Insertion loss        | < 0.2 dB typ.          | < 0.2 dB typ.          | < 0.2 dB typ.          | < 0.2 dB typ.    |
| Return loss           | > 25 dB typ.           | > 25 dB typ.           | > 45 dB typ.           | > 45 dB typ.     |
| Ferrule               | Zirconia ceramic       | Zirconia ceramic       | Zirconia ceramic       | Zirconia ceramic |
| Housing / Body        | Plastic with metal nut | Plastic with metal nut | Plastic with metal nut | Plastic          |
| Operating temperature | -40°C to 80°C          | -40°C to 80°C          | -40°C to 80°C          | -40°C to 80°C    |
| Storage temperature   | -40°C to 85°C          | -40°C to 85°C          | -40°C to 85°C          | -40°C to 85°C    |

## 2.1 Couplings, Connectors, Pigtails

### 2.1.3 3M™ FC

#### Type/Order text

#### Ref.-No.

#### 3M™ FC Coupling



##### FC Coupling, singlemode

Square Flanged

Packaging: 60 units per box

8210

##### FC Coupling, singlemode

for D hole mounting

Spacer and nut included

Packaging: 60 units per box

8211

##### FC APC Coupling, singlemode

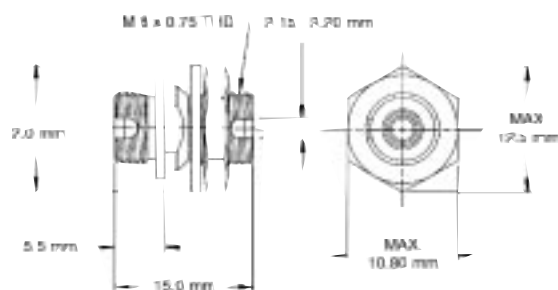
for D hole mounting

spacers and nut included

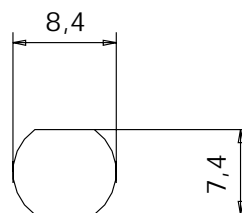
Packaging: 60 units per box

8211-APC

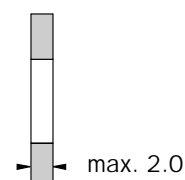
#### 8211 APC Coupling



#### Hole pattern



#### Wall thickness



| Connector type        | 8210             | 8211             | 8211-APC         |
|-----------------------|------------------|------------------|------------------|
|                       | Singlemode       | Singlemode       | Singlemode       |
| Sleeve                | Zirconia ceramic | Zirconia ceramic | Zirconia ceramic |
|                       | Metal            | Metal            | Metal            |
| Operating temperature | -40°C to 85°C    | -40°C to 85°C    | -40°C to 85°C    |

#### Type/Order text

#### Ref.-No.

#### 3M™ FC Pigtails



##### FC Pigtail 9/125, singlemode Fibre

Length: 2 m, PU: 12

AAL00-AU0002



##### FC APC 8° Pigtail 9/125, singlemode Fibre

Length: 2 m, PU: 12

AAE00-AU0002

## 2.1 Couplings, Connectors, Pigtails

### 2.1.4 E2000

#### Type/Order text

#### Ref.-No.

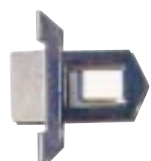
#### E2000 Coupling



**E2000 APC coupling, singlemode**  
Simplex, green, 2 mounting screws included

05-751-13400

Packaging: 1 unit

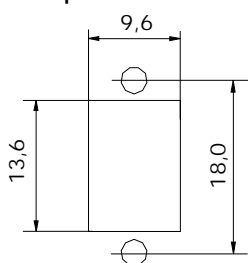


**E2000 Simplex, metal mounting clamp**  
for screwsless mounting of E2000 connectors

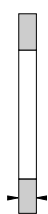
05-750-14100

metal, Packaging: 10 units per pack

#### Hole pattern



#### Sheet thickness



1.6 mm max. for  
quick assembly spring  
12.0 mm max. for  
Screw installation

| Connector type        | E2000 APC        |
|-----------------------|------------------|
| Type                  | Singlemode       |
| Sleeve                | Zirconia ceramic |
| Housing               | Plastic, green   |
| Operating temperature | -40°C to 85°C    |

#### Type/Order text

#### Ref.-No.

#### E2000 Pigtail



**E2000 APC 8° Pigtail 9/125, singlemode Fibre**  
Length: 2 m, PU: 12

ABQ00-AU0002

| Connector type        | E2000-APC        |
|-----------------------|------------------|
| Adhesive type         | Epoxy            |
| Fibre Type            | 9/125            |
| Insertion loss        | < 0.2 dB typ.    |
| Return loss           | > 75 dB typ.     |
| Ferrule               | Zirconia ceramic |
| Housing / Body        | Plastic          |
| Boot                  | green            |
| Operating temperature | -40°C to 85°C    |
| Storage temperature   | -40°C to 85°C    |

## 2.2 Assembly Systems

### 2.2.1 3M™ Hot Melt

#### Description

#### 3M™ Hot Melt optical fibre connector assembly system



3M Hot Melt Connectors have a proven record of high performance and ease of use in local area networks around the world. They allow cost effective production of fibre optic patch cords or pigtails in just a few minutes in either a field or factory environment, as well as direct terminations of backbone or horizontal cable.

The plugs are factory pre-filled with a special Hot Melt adhesive which ensures, in combination with an oven, a fast and reliable assembly solution.

All connector types are equipped with high-precision ceramic ferrules. Different boot colours are available to guarantee identifiable channel separation.

One kit provides everything needed to terminate ST, FC, and SC connectors for both singlemode and multimode applications.

#### Use

- use in LAN building wiring, to expand existing networks in conformance with national and international standards bodies EIA/TIA-568, ISO/IEC 11801 and EN 50173
- Measuring, control and security systems
- Multimode and singlemode applications

#### Highlights

- **quick, simple and safe assembly in the field or factory**
- **Connector, adhesive and polishing film from one manufacturer guarantees a high quality connector**
- **simple polishing process, either manually or with a polishing machine**
- **all connectors contain a zirconia ferrule and Hot Melt adhesive**
- **Anti-bend design boot available in various colours for definite channel separation**
- **suitable for all LAN and CATV applications**
- **suitable for internal or external applications**

## 2.2 Assembly Systems

### 2.2.1 3M™ Hot Melt

#### Type/Order text

#### Ref.-No.

#### 3M™ Hot Melt Assembly Kit



**Hot Melt assembly case,** for ST, SC, & FC/PC connectors. The Hot Melt assembly kit for ST, SC, and FC/PC connectors, contains all the tools and consumables needed for assembly. Supplied in a convenient carrying case.

**6351**

#### Contents of the case

- |  |   |
|--|---|
| 1. Hot Melt Training Video                   | 11. Connector Holders for Hot Melt Polisher |
| 2. Plastic Bottle for Alcohol (Empty)        | 12. Lapping Film 2μ, 200 Discs              |
| 3. Plastic Bottle for Water (Empty)          | 13. Fibre Cleaving Pen                      |
| 4. Fibre Ends Bin                            | 14. Lapping Film, 0.05μ, 50 Discs           |
| 5. Hot Melt Oven Incorporating Cooling Stand | 15. Microscope, Illuminated, 100x           |
| 6. Polishing Pad                             | 16. Crimping Pliers Universal               |
| 7. Cleaning Cloth, 100 Pieces                | 17. Stripping Tool for Cable Sheath         |
| 8. Polishing Puck                            | 18. Special Scissors                        |
| 9. ST, SC and FC Connector Holders           | 19. Instructions                            |
| 10. Stripping Tool for Fibre Coating         | 20. Carrying Case                           |



#### Hot melt polisher

Polishing machine with universal double polishing head for all 3M Hot Melt Connector types.

**6851-E**

Used to process increased numbers of Hot Melt connectors and to ensure a uniform connector end surface.

230 V power supply and 2μ polishing film included (50 discs)

#### Contents of case:

- |                              |                              |
|------------------------------|------------------------------|
| 1. Lapping Film 2u, 50 Discs | 3. Fibre Optic Lead Assembly |
| 2. Hot Melt Polisher 6851-E  | 4. 230V Power Supply         |

## 2.2 Assembly Systems

### 2.2.1 3M™ Hot Melt

#### Type/Order text

#### Ref.-No.

### 3M™ Hot Melt Assembly System

#### Hot Melt Tubing Kit

6222995-E

For direct installation of FO connectors on to loose tube cables. Suited for all 250 µm primary coated fibres. Protects the fibre from mechanical influences and simplifies connector installation. The protective tube outer diameter is 900 µm, identical to the dimensions of a normal breakout cable.

#### Delivery:

- Polypropylene tube, 60 m
- 25 shrink tubes, 6.4 x 50 mm with interior adhesive
- 25 transition sleeves to join the tube to the cable
- 10 units each colour coded rings (12 basic colours)
- Assembly instructions



Connector holder to accommodate 3M Hot Melt connectors of types ST, SC and FC in Hot Melt oven.

#### ST Hot Melt Connector holder

6190

PU: 6 units per pack



#### SC Hot Melt Connector holder

SP-00504

PU: 4 units per pack



#### FC Hot Melt Connector holder

SP-00505

PU: 4 units per pack



ST

Holder to affix 3M Hot Melt Connector on polisher 6850 A

#### ST holder

6892

PU: 1 unit



FC

#### SC holder

6392

PU: 1 unit

#### FC holder

6292

PU: 1 unit



#### Mobile Assembly Unit

6296-E







without tools

For the cost-effective in the field direct assembly of 3M Hot Melt connectors. The unit is height-adjustable and has casters for easy movement. It can be completely disassembled for transport. It offers space for keeping assembly materials and has an integrated fan for quicker cooling of connectors.

PU: 1 unit

## 2.2 Assembly Systems

### 2.2.1 3M™ Hot Melt

| Type/Order text   | Ref.-No.   |
|---|------------|
| <b>3M™ SC / FC Assembly Tool</b><br> <b>Crimping pliers SC and FC</b><br>PU: 1 unit  | 6955-C     |
| <hr/>   |            |
| <b>3M™ Hot Melt Consumables</b><br> <b>Cleaning tissues</b><br>for cleaning fibres and connector end faces<br>PU: 100/1000 pieces | on request |
| <hr/>   |            |
|  <b>One-step polishing film 2 μ,</b><br>round, for manual polishing<br>PU: 50 units  | 6192-A     |
| <hr/>   |            |
|  <b>Polishing film for Autopolisher,</b><br>with hole, 2 μ<br>also available: Type 6192-B and 6851-E<br>PU: 50 units             | 6850       |
| <hr/>   |            |
|  <b>Polishing puck, universal</b><br>for manual polishing, plastic<br>PU: 1 unit   | 8892       |
| <hr/>   |            |
|  <b>Polishing pad, round</b><br>for manual polishing, plastic<br>PU: 1 unit  | 6355-P     |



# 2.2 Assembly Systems

## 2.2.2 Crimplok™

### Description

The Crimplok™ connector combines the speed of non-adhesive connectors with the performance characteristics of epoxy and Hot Melt connectors. Crimplok™ Connectors are the ideal solution for emergency restoration work or for quickly making fibre connections at the desk.

**Crimplok connectors were designed to:**

- Save time in installation
- Provide rugged, reliable performance, meeting or exceeding current EIA/TIA 568, ISO 11801 and EN 50173 specifications.
- Install cleanly and simply with fewer parts and tools.

Available in both SC and ST, single mode and multimode connector versions, Crimplok connectors are faster to install than epoxy connectors since there is no set-up or curing time. Crimplok connectors do not require special heating tools or ovens, so time spent searching for electrical outlets is eliminated. Polishing the connector is also a simple process that can be performed in seconds.

The Crimplok connector incorporates proven 3M malleable metal element fibre gripping technology. There is no fibre splice or second joint inside the connector, so there is no added attenuation at the connection. When the conformable metal element closes, it grips a length of the fibre, eliminating fibre movement associated with other crimp-style connectors. The strength of the metallic element ensures that Crimplok connectors meet industry standards for temperature and humidity.



ST Connector



SC Connector

### Highlights

- quick, simple and safe assembly in the field
- no adhesive required
- simple manual polishing process
- all connectors contain a pre-radiused Zirconia ferrule
- anti-bend design boot
- suitable for all LAN and CATV applications
- minimal tools required
- no electricity required
- meets EIA/TIA-568 specifications

### Type/Order text

### Ref.-No.



The Crimplok assembly kit for ST and SC connectors, contains all the tools and consumables needed for assembly. Supplied in a convenient carrying case.

Crimplok assembly case

6955

#### Contents of case:

1. Crimping pliers, universal
2. 6955-T Activation Tool
3. Lapping film 2µ, 200 discs
4. Lapping film 0,05µ, 50 discs
5. Polishing pad
6. Plastic bottles, empty
7. Special scissors
8. Stripping tool for cable sheath
9. Stripping tool for coating
10. Microscope, illuminated, 100X
11. Cleaning cloth, 100-pieces
12. Polishing puck
13. Assembly instructions
14. Carrying case



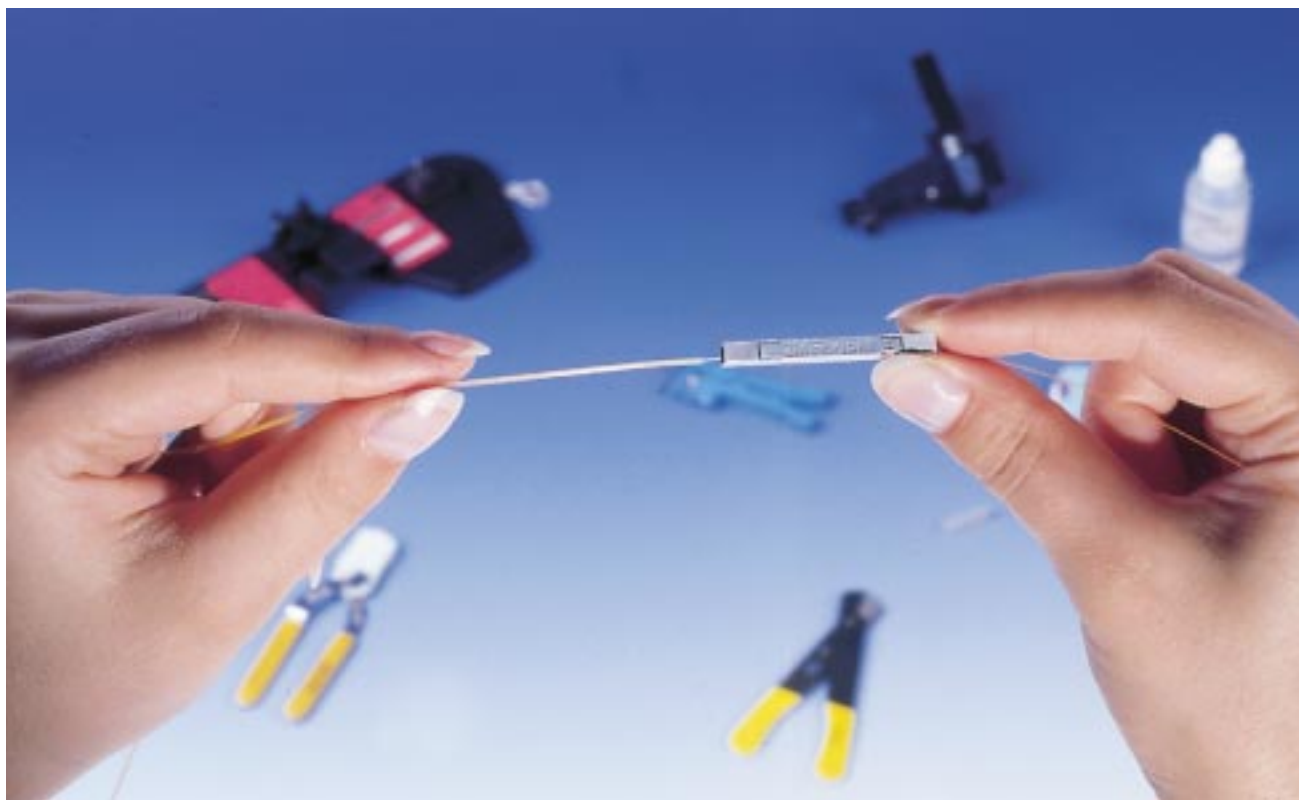
Activation Tool, ST/SC  
PU: 1

6955-T

## 2.2 Assembly Systems

### 2.2.3 Fibrlok™

#### Description



Fibrlok is a universal mechanical splice, which can be used wherever quick and secure splice connections are required.

Fibrlok Universal splice consists of a highly resistant plastic base, body, and lid, in which a metallic element provides the connection. The metal element surrounds the optical fibres to be connected aligning the fibres precisely and permanently in place.

The universal splice utilises a single cleave length for both 250 and 900µm coated fibres and has the ability to compensate for variations in fibre outer diameters for improved splicing yield.

The Fibrlok Universal splice can be used with multimode and single-mode fibres with 125 µm diameter and coatings of 250 to 900 µm.

#### Apply in

- Overhead cable joints
- In-ground joints
- Assembly shafts
- Cable branching boxes
- Building wiring

#### Highlights

- **Fibrlok™ is a universal splice for both 250 to 900 µm coated fibres**
- **The same splice is used for either singlemode or multimode fibres**
- **Identical stripping lengths are used for 250/900 µm fibres**
- **Repositioning of fibres is possible**

## 2.2 Assembly Systems

### 2.2.3 Fibrlok™

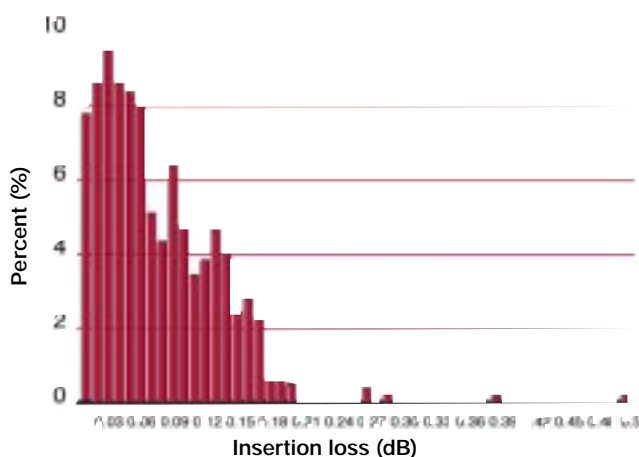
#### Description

#### Fibrlok™ Universal

##### Fibrlok™ 2529 universal connector for optical fibres

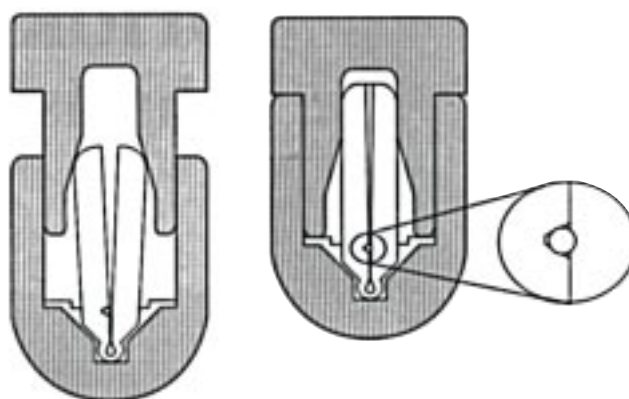
The following diagram illustrates the distribution of results from measuring the insertion loss on 550 Fibrlok™ universal connectors (equal optical fibres, coating: 250 µm).

Mean insertion loss: 0.07 dB.

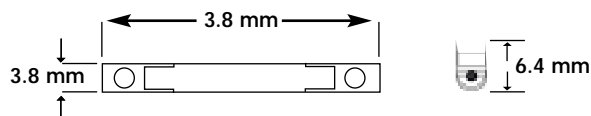


##### Cross-section of an open and a pressed Fibrlok™ Universal

To make the connection, the prepared fibre ends are inserted into the connector. Using the assembly tool, the connector lid is closed, and the metal element positions the fibres accurately together.



##### Dimensions



|                        |   |
|------------------------|---|
| Connector type         | Fibrlok™  |
| Fibre diameter         | 125 µm  |
| Coating                | 250 to 900 µm   |
| Useful life            | > 30 years (Arrhenius DIN/IEC 88 T1)  |
| Assembly time          | <30 s after preparation of fibre ends   |
| Insertion loss         | mean = 0.1 dB   |
| Return loss            | >35 dB from -40°C to +80°C<br>>60 dB at room temperature                                    |
| Fibre extraction force | >4.5 N, typically: 13 N   |
| Material               | highly temperature-resistant plastic with aluminium alloy metal element<br>UL 94, V-0 value |
| Operating temperature  | -40°C to +80°C  |
| Temperature cycle      | Change of insertion loss: <0.5 dB.<br>from -40°C to +80°C                                   |
| Mould resistance       | ASTM G-21-70; value 0   |
| Vibration              | EIA standard FOTP-11, test procedure 1  |
| Water storage          | 7 days at +43° C, change in attenuation <=0.05 dB   |

## 2.2 Assembly Systems

### 2.2.3 Fibrlok™

#### Type/Order text

#### Ref.-No.

#### Fibrlok™ Universal



##### Fibrlok Universal, single fibre mechanical splice

2529

The Fibrlok Universal splice for fibre optics can be used with singlemode or multimode fibres with 125 µm diameter and coatings of 250 to 900 µm.

PU: 60 units



##### Fibrlok Universal Splice Holder

25299-H

To accommodate 6 Fibrlok Universal splice connectors, single, in Quante DIN splicing cassette

PU: 20 units



##### Fibrlok Universal Tool Kit

##### Complete

2530

##### Without Cleaver

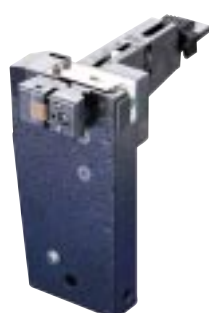
2531

For production of mechanical splicing connections with Fibrlok Universal, splice. All required tools in a convenient case.

PU: 1 set in carrying case

##### Contents of case:

- |                                |                           |
|--------------------------------|---------------------------|
| 1. 2501 assembly tool          | 6. Scissors               |
| 2. T&B Cleaver (for 2530 only) | 7. Empty plastic bottle   |
| 3. Microstrip fibre stripper   | 8. Lint free cloths (100) |
| 4. Miller cable stripper       | 9. 20x Magnifying glass   |
| 5. Ideal cable stripper        | 10. Carrying case         |



##### T&B Cleaver

05-00065

Fibre cleaving tool for Universal Fibrlok

PU: 1 unit

##### Contents of case:

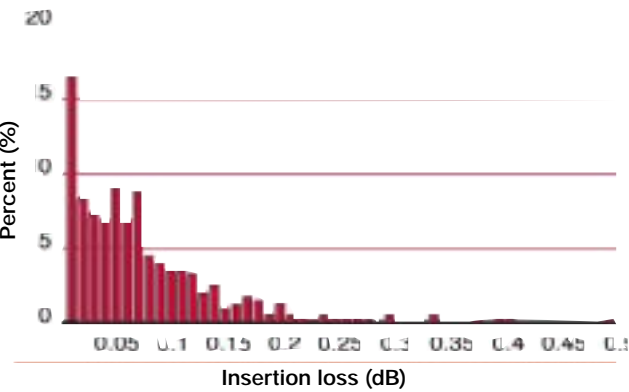
- Cleaver
- Clamp for table mounting

## 2.2 Assembly Systems

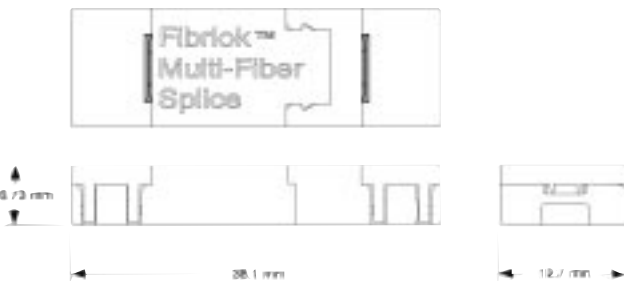
### 2.2.3 Fibrlok™

#### Description

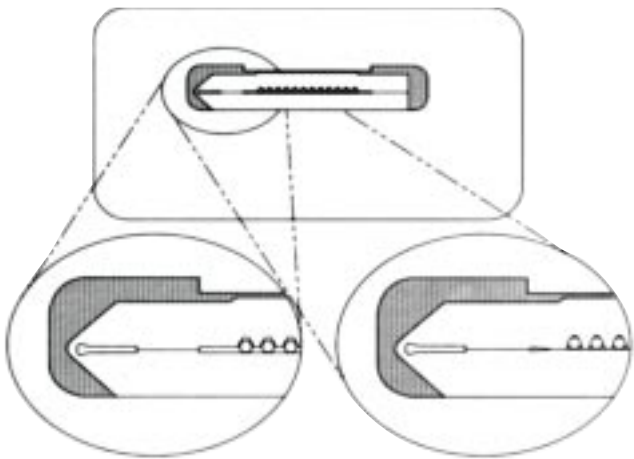
#### Multifibre Fibrlok™ Assembly Systems



#### Dimensions



Cross-section of an open and a completed Multi-Fibrlok for 12 fibres



#### Type/Order text

#### Ref.-No.

#### Multifibre Fibrlok

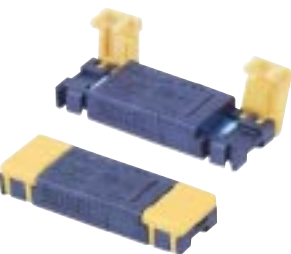
The mechanical splices of the 2600 series are suited both for 125 µm singlemode and multimode fibres with a 250 µm secondary coating. Multi-Fibrlok can be used for ribbon and for single fibres configured to a ribbon with the 2670 ribbonizer. Colour-coded caps identify the connector type. Series 2600 builds upon the proven Fibrlok technology.



#### Multi-Fibrlok 4 fibre

For singlemode and multimode fibres with ribbon fibre structure  
Red housing caps  
PU: 3/12 pieces

2604



#### Multi-Fibrlok, 12-fibre

For singlemode and multimode fibres with ribbon fibre structure  
Yellow housing caps  
PU: 3/12 pieces

2612

## 2.2 Assembly Systems

### 2.2.3 Fibrlok™

#### Type/Order text

#### Ref.-No.

#### Multifibre Fibrlok™



#### Fibrlok Tool Kit without cleaver

2601

For processing mechanical splicing connections with Multi-Fibrlok, 4 and 12-fold. All required tools are contained in a convenient case.

PU: 1 set in carrying case

For fibre preparation, we recommend a Fujikura cleaver.

#### Contents of case:

- |   |                               |
|---|-------------------------------|
| 1. Mounting plate 2620                    | 7. Heated stripping tongs     |
| 2. 4 way ribbon holder for mounting plate | 8. 2 fibre guides for cleaver |
| 3. Distance clip for cleaver              | 9. Magnifying glass           |
| 4. Test light                             | 10. Plastic bottle (empty)    |
| 5. Offset tool                            | 11. Cleaning tissue           |
| 6. Power supply, 230 V                    | 12. Assembly instructions     |
|   | 13. Carrying Case             |



#### Fibrlok Ribbonizer

Ribbonizer to configure fibre ribbons

2670

PU: 1 set in carrying case

#### Contents of case:

- |                      |                   |
|----------------------|-------------------|
| 1. Carrying Case     | 5. Key            |
| 2. using instruction | 6. Blade Assembly |
| 3. Ribbonizer        | 7. Tweezers       |
| 4. Adhesive tape     |                   |



#### Replacement Adhesive Tape

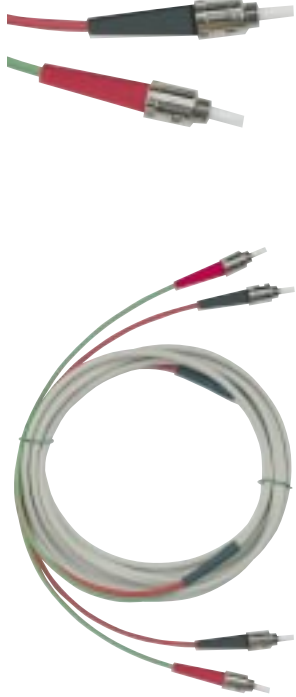

to configure fibre ribbons

2671

PU: 200 units

## 2.3 Cable Assemblies

### 2.3.1 3M™ Multimode Patch Cables

| Type/Order text   | Ref.-No.  |
|---|---|
| <b>3M™ ST - ST</b>  |   |
|   | <b>ST - ST patch cables, multimode, duplex 50/125µm, jacket colour grey, zip cable. Each assembly is packed 1 per bag and 12 (or 6) per box as defined below.</b>   |
|   | Length: 1.0 m, PU: 1/12 <b>BANAN-AX0001</b>   |
|   | Length: 1.5 m, PU: 1/12 <b>BANAN-AX01.5</b>   |
|   | Length: 2.0 m, PU: 1/12 <b>BANAN-AX0002</b>   |
|   | Length: 3.0 m, PU: 1/12 <b>BANAN-AX0003</b>   |
|   | Length: 4.0 m, PU: 1/12 <b>BANAN-AX0004</b>   |
|   | Length: 5.0 m, PU: 1/12 <b>BANAN-AX0005</b>   |
|   | Length: 7.0 m, PU: 1/6 <b>BANAN-AX0007</b>  |
|   | Length: 10.0 m, PU: 1/6 <b>BANAN-AX0010</b>   |
|   | Length: 15.0 m, PU: 1/6 <b>BANAN-AX0015</b>   |
|   | Length: 20.0 m, PU: 1/6 <b>BANAN-AX0020</b>   |
|  | <b>ST - ST patch cables, multimode, duplex 62.5/125µm, jacket colour grey, zip cable. Each assembly is packed 1 per bag and 12 (or 6) per box as defined below.</b> |
|   | Length: 1.0 m, PU: 1/12 <b>BANAN-AQ0001</b>   |
|   | Length: 1.5 m, PU: 1/12 <b>BANAN-AQ01.5</b>   |
|   | Length: 2.0 m, PU: 1/12 <b>BANAN-AQ0002</b>   |
|   | Length: 3.0 m, PU: 1/12 <b>BANAN-AQ0003</b>   |
|   | Length: 4.0 m, PU: 1/12 <b>BANAN-AQ0004</b>   |
|   | Length: 7.0 m, PU: 1/6 <b>BANAN-AQ0007</b>  |
|   | Length: 10.0 m, PU: 1/6 <b>BANAN-AQ0010</b>   |
|   | Length: 15.0 m, PU: 1/6 <b>BANAN-AQ0015</b>   |
|   | Length: 20.0 m, PU: 1/6 <b>BANAN-AQ0020</b>   |

|                       |                                  |
|-----------------------|----------------------------------|
| Fibre Type            | 50/125, 62.5/125                 |
| Insertion loss        | < 0.15 dB typ.                   |
| Return loss           | >= 25 dB typ.                    |
| Ferrule               | Zirconia ceramic                 |
| Housing               | Metal                            |
| Boot                  | black/red                        |
| Operating temperature | -40°C to 60°C                    |
| Storage temperature   | -40°C to 80°C                    |
| Cable                 | I-VH 2, 50/125, I-VH 2, 62.5/125 |
| Jacket colour         | Grey or Black                    |

#### NOTICE:

Other connector types for example FC/PC and SC APC are available upon request.



## 2.3 Cable Assemblies

### 2.3.1 3M™ Multimode Patch Cables

#### Type/Order text

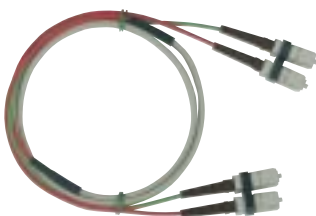
#### Ref.-No.

#### 3M™ SC - SC



SC - SC patch cables, multimode, duplex 50/125µm, jacket colour grey, zip cable. Each assembly is packed 1 per bag and 12 (or 6) per box as defined below.

|                         |              |
|-------------------------|--------------|
| Length: 1.0 m, PU: 1/12 | BDBDB-AX0001 |
| Length: 1.5 m, PU: 1/12 | BDBDB-AX01.5 |
| Length: 2.0 m, PU: 1/12 | BDBDB-AX0002 |
| Length: 3.0 m, PU: 1/12 | BDBDB-AX0003 |
| Length: 4.0 m, PU: 1/12 | BDBDB-AX0004 |
| Length: 5.0 m, PU: 1/12 | BDBDB-AX0005 |
| Length: 7.0 m, PU: 1/6  | BDBDB-AX0007 |
| Length: 10.0 m, PU: 1/6 | BDBDB-AX0010 |
| Length: 15.0 m, PU: 1/6 | BDBDB-AX0015 |
| Length: 20.0 m, PU: 1/6 | BDBDB-AX0020 |



SC - SC patch cables, multimode, duplex 62.5/125µm, jacket colour grey, zip cable. Each assembly is packed 1 per bag and 12 (or 6) per box as defined below.

|                         |              |
|-------------------------|--------------|
| Length: 1.0 m, PU: 1/12 | BDBDB-AQ0001 |
| Length: 1.5 m, PU: 1/12 | BDBDB-AQ01.5 |
| Length: 2.0 m, PU: 1/12 | BDBDB-AQ0002 |
| Length: 3.0 m, PU: 1/12 | BDBDB-AQ0003 |
| Length: 4.0 m, PU: 1/12 | BDBDB-AQ0004 |
| Length: 5.0 m, PU: 1/12 | BDBDB-AQ0005 |
| Length: 7.0 m, PU: 1/6  | BDBDB-AQ0007 |
| Length: 10.0 m, PU: 1/6 | BDBDB-AQ0010 |
| Length: 15.0 m, PU: 1/6 | BDBDB-AQ0015 |
| Length: 20.0 m, PU: 1/6 | BDBDB-AQ0020 |



|                       |                                  |
|-----------------------|----------------------------------|
| Fibre Type            | 50/125, 62.5/125                 |
| Insertion loss        | < 0.15 dB typ.                   |
| Return loss           | >= 25 dB typ.                    |
| Ferrule               | Zirconia ceramic                 |
| Housing               | Plastic, grey                    |
| Boot                  | black                            |
| Operating temperature | -40°C to 60°C                    |
| Storage temperature   | -40°C to 80°C                    |
| Cable                 | I-VH 2, 50/125, I-VH 2, 62.5/125 |
| Jacket colour         | Grey or Black                    |



## 2.3 Cable Assemblies

### 2.3.1 3M™ Multimode Patch Cables

#### Type/Order text

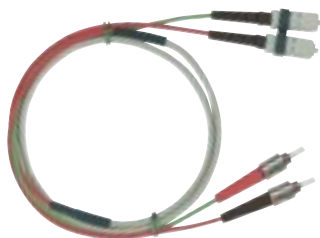
#### Ref.-No.

#### 3M™ ST - SC



ST - SC patch cables, multimode, duplex 50/125µm, jacket colour grey, zip cable. Each assembly is packed 1 per bag and 12 (or 6) per box as defined below.

|                         |              |
|-------------------------|--------------|
| Length: 1.0 m, PU: 1/12 | BANDB-AX0001 |
| Length: 1.5 m, PU: 1/12 | BANDB-AX01.5 |
| Length: 2.0 m, PU: 1/12 | BANDB-AX0002 |
| Length: 3.0 m, PU: 1/12 | BANDB-AX0003 |
| Length: 4.0 m, PU: 1/12 | BANDB-AX0004 |
| Length: 5.0 m, PU: 1/12 | BANDB-AX0005 |
| Length: 7.0 m, PU: 1/6  | BANDB-AX0007 |
| Length: 10.0 m, PU: 1/6 | BANDB-AX0010 |
| Length: 15.0 m, PU: 1/6 | BANDB-AX0015 |
| Length: 20.0 m, PU: 1/6 | BANDB-AX0020 |



ST - SC patch cables, multimode, duplex 62.5/125µm, jacket colour grey, zip cable. Each assembly is packed 1 per bag and 12 (or 6) per box as defined below.

|                         |              |
|-------------------------|--------------|
| Length: 1.0 m, PU: 1/12 | BANDB-AQ0001 |
| Length: 1.5 m, PU: 1/12 | BANDB-AQ01.5 |
| Length: 2.0 m, PU: 1/12 | BANDB-AQ0002 |
| Length: 3.0 m, PU: 1/12 | BANDB-AQ0003 |
| Length: 4.0 m, PU: 1/12 | BANDB-AQ0004 |
| Length: 5.0 m, PU: 1/12 | BANDB-AQ0005 |
| Length: 7.0 m, PU: 1/6  | BANDB-AQ0007 |
| Length: 10.0 m, PU: 1/6 | BANDB-AQ0010 |
| Length: 15.0 m, PU: 1/6 | BANDB-AQ0015 |
| Length: 20.0 m, PU: 1/6 | BANDB-AQ0020 |



|                       |                                  |
|-----------------------|----------------------------------|
| Fibre Type            | 50/125, 62.5/125                 |
| Insertion loss        | < 0.15 dB typ.                   |
| Return loss           | >= 25 dB typ.                    |
| Ferrule               | Zirconia ceramic                 |
| Housing               | Plastic, grey                    |
| Boot                  | black (SC), black/red (ST)       |
| Operating temperature | -40°C to 60°C                    |
| Storage temperature   | -40°C to 80°C                    |
| Cable                 | I-VH 2, 50/125, I-VH 2, 62.5/125 |
| Jacket colour         | Grey                             |

## 2.3 Cable Assemblies

### 2.3.1 3M™ Multimode Patch Cables

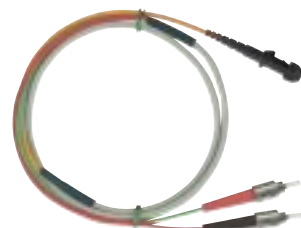
#### Type/Order text

#### Ref.-No.

#### 3M™ MT-RJ - ST



MT-RJ - ST patch cables, multimode, duplex 50/125µm, jacket colour grey, zip cable. Each assembly is packed 1 per bag and 6 per box as defined below.



|                        |              |
|------------------------|--------------|
| Length: 1.0 m, PU: 1/6 | BMTAN-AX0001 |
|------------------------|--------------|

|                        |              |
|------------------------|--------------|
| Length: 2.0 m, PU: 1/6 | BMTAN-AX0002 |
|------------------------|--------------|

|                        |              |
|------------------------|--------------|
| Length: 3.0 m, PU: 1/6 | BMTAN-AX0003 |
|------------------------|--------------|

|                        |              |
|------------------------|--------------|
| Length: 5.0 m, PU: 1/6 | BMTAN-AX0005 |
|------------------------|--------------|

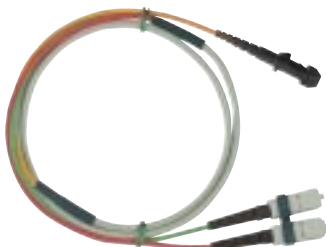
|                         |              |
|-------------------------|--------------|
| Length: 10.0 m, PU: 1/6 | BMTAN-AX0010 |
|-------------------------|--------------|



#### 3M™ MT-RJ - SC



MT-RJ - SC patch cables, multimode, duplex 50/125µm, jacket colour grey, zip cable. Each assembly is packed 1 per bag and 6 per box as defined below.



|                        |              |
|------------------------|--------------|
| Length: 1.0 m, PU: 1/6 | BMTDB-AX0001 |
|------------------------|--------------|

|                        |              |
|------------------------|--------------|
| Length: 2.0 m, PU: 1/6 | BMTDB-AX0002 |
|------------------------|--------------|

|                        |              |
|------------------------|--------------|
| Length: 3.0 m, PU: 1/6 | BMTDB-AX0003 |
|------------------------|--------------|

|                        |              |
|------------------------|--------------|
| Length: 5.0 m, PU: 1/6 | BMTDB-AX0005 |
|------------------------|--------------|


|                         |              |
|-------------------------|--------------|
| Length: 10.0 m, PU: 1/6 | BMTDB-AX0010 |
|-------------------------|--------------|




|                       |                            |
|-----------------------|----------------------------|
| Adhesive type         | Epoxy                      |
| Fibre Type            | 50/125,                    |
| Insertion loss        | < 0.2 dB typ.              |
| Return loss           | >= 25 dB typ.              |
| Ferrule               | Zirconia ceramic           |
| Housing               | Plastic, grey              |
| Boot                  | black (SC), black/red (ST) |
| Operating temperature | -40°C to 60°C              |
| Storage temperature   | -40°C to 80°C              |
| Cable                 | I-VH 2 50/125              |
| Jacket colour         | Grey                       |

## 2.3 Cable Assemblies

### 2.3.2 3M™ Singlemode Patch Cables

| Type/Order text   | Ref.-No.  |
|---|---|
| <b>3M™ ST - ST</b>  |   |
|  | ST - ST patch cables, singlemode, simplex 9/125/3000µm, jacket colour yellow. Each assembly is packed 1 per bag and 12 (or 6) per box as defined below. |
|   | Length: 1.0 m, PU: 1/12 AAMAM-AT0001  |
|   | Length: 2.0 m, PU: 1/12 AAMAM-AT0002  |
|   | Length: 3.0 m, PU: 1/12 AAMAM-AT0003  |
|   | Length: 5.0 m, PU: 1/12 AAMAM-AT0005  |
|   | Length: 7.0 m, PU: 1/6 AAMAM-AT0007   |
|   | Length: 10.0 m, PU: 1/6 AAMAM-AT0010  |
|   | Length: 15.0 m, PU: 1/6 AAMAM-AT0015  |
|   | Length: 20.0 m, PU: 1/6 AAMAM-AT0020  |
|   | Length: 25.0 m, PU: 1/6 AAMAM-AT0025  |

#### 3M™ ST - SC/PC

|   |  |
|---|--|
|  | ST - SC/PC patch cables, singlemode, simplex 9/125/3000µm, jacket colour yellow. Each assembly is packed 1 per bag and 12 (or 6) per box as defined below. |
|   | Length: 1.0 m, PU: 1/12 AAMDA-AT0001   |
|   | Length: 2.0 m, PU: 1/12 AAMDA-AT0002   |
|   | Length: 3.0 m, PU: 1/12 AAMDA-AT0003   |
|   | Length: 5.0 m, PU: 1/12 AAMDA-AT0005   |
|   | Length: 7.0 m, PU: 1/6 AAMDA-AT0007  |
|   | Length: 10.0 m, PU: 1/6 AAMDA-AT0010   |
|   | Length: 15.0 m, PU: 1/6 AAMDA-AT0015   |
|   | Length: 20.0 m, PU: 1/6 AAMDA-AT0020   |
|   | Length: 25.0 m, PU: 1/6 AAMDA-AT0025   |

|                       |                                |
|-----------------------|--------------------------------|
| Adhesive type         | Epoxy                          |
| Fibre Type            | 9/125                          |
| Insertion loss        | < 0.2 dB typ.                  |
| Return loss           | >= 55 dB typ.                  |
| Ferrule               | Zirconia ceramic               |
| Housing               | Plastic, blue (SC), metal (ST) |
| Boot                  | black (SC), black/red (ST)     |
| Operating temperature | -40°C to 80°C                  |
| Storage temperature   | -40°C to 85°C                  |
| Cable                 | I-VH 1 9/125                   |
| Jacket colour         | Yellow                         |

## 2.3 Cable Assemblies

### 2.3.2 3M™ Singlemode Patch Cables

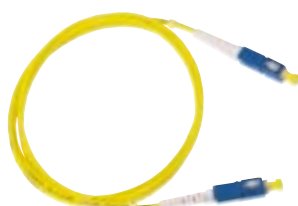
#### Type/Order text

#### Ref.-No.

#### 3M™ SC/PC - SC/PC



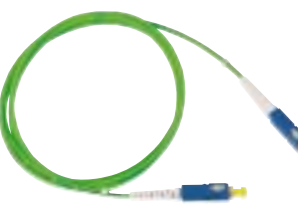
SC/PC - SC/PC patch cables, singlemode, simplex, 9/125/3000 µm, jacket colour yellow. Each assembly is packed 1 per bag and 12 (or 6) per box as defined below.



|                         |              |
|-------------------------|--------------|
| Length: 1.0 m, PU: 1/12 | ADADA-AT0001 |
| Length: 2.0 m, PU: 1/12 | ADADA-AT0002 |
| Length: 3.0 m, PU: 1/12 | ADADA-AT0003 |
| Length: 5.0 m, PU: 1/12 | ADADA-AT0005 |
| Length: 7.0 m, PU: 1/6  | ADADA-AT0007 |
| Length: 10.0 m, PU: 1/6 | ADADA-AT0010 |
| Length: 15.0 m, PU: 1/6 | ADADA-AT0015 |
| Length: 20.0 m, PU: 1/6 | ADADA-AT0020 |
| Length: 25.0 m, PU: 1/6 | ADADA-AT0025 |



SC/PC - SC/PC patch cables, singlemode, simplex, 9/125/3000 µm, jacket colour green. Each assembly is packed 1 per bag and 12 (or 6) per box as defined below.



|                         |              |
|-------------------------|--------------|
| Length: 1.0 m, PU: 1/12 | ADADA-DE0001 |
| Length: 2.0 m, PU: 1/12 | ADADA-DE0002 |
| Length: 5.0 m, PU: 1/12 | ADADA-DE0005 |
| Length: 10.0 m, PU: 1/6 | ADADA-DE0010 |
| Length: 15.0 m, PU: 1/6 | ADADA-DE0015 |
| Length: 20.0 m, PU: 1/6 | ADADA-DE0020 |
| Length: 25.0 m, PU: 1/6 | ADADA-DE0025 |

|                       |                    |
|-----------------------|--------------------|
| Adhesive type         | Epoxy              |
| Fibre Type            | 9/125              |
| Insertion loss        | < 0.2 dB typ.      |
| Return loss           | >= 55 dB (PC) typ. |
| Ferrule               | Zirconia ceramic   |
| Housing               | Plastic, blue (PC) |
| Boot                  | black, white (SC)  |
| Operating temperature | -40°C to 80°C      |
| Storage temperature   | -40°C to 85°C      |
| Cable                 | I-VH 1 9/125       |
| Jacket colour         | Yellow, Green      |

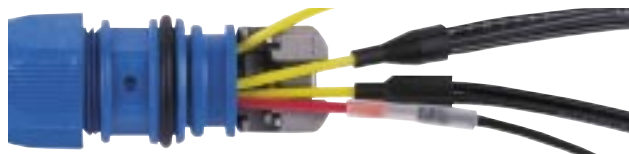
## 2.4 Accessories

### 2.4.1 3M™ Loose Tube Dividers

#### Description

#### 3M™ Breakout Adapter

Available in several variations, they guarantee the safe guidance and breakout of FO fibres to splicing trays. Simply fit the adapter onto the incoming bundled fibre and oversleeve it with the fibre tube. Suitable for all bundled fibres with 2.4 mm to 3.2 mm OD.



#### Type/Order text

#### Ref.-No.



##### Breakout adapter 1/1

Consists of breakout adapter 1/1 and bundled fibre tube.  
For the flexible guidance of incoming/outgoing fibres to the splice cassettes.

PU: 16 units, bundled fibre tube, 3.2 m

N581078A



##### Breakout adapter 1/1

for the extension of bundled fibres with the bundled fibre tube.  
PU: 10 units

N581124A



##### Breakout adapter 2/1

To split one bundled fibre into two bundled fibre tubes.  
PU: 10 units

N581121A



##### Breakout adapter 1/4

To split one bundled fibre into four bundled fibre tubes.  
PU: 10 units

N581122A



##### Breakout adapter 1/6

To split one bundled fibre into six bundled fibre tubes.  
PU: 10 units

N581123A



##### Bundled fibre tube

for oversleeving/breaking out of bundled fibres.  
Simply plug onto the breakout adapter.  
ID: 1.8 mm; OD: 3.0 mm  
Colour: black, PU: 25 m spool

N581125A

## 2.4 Accessories

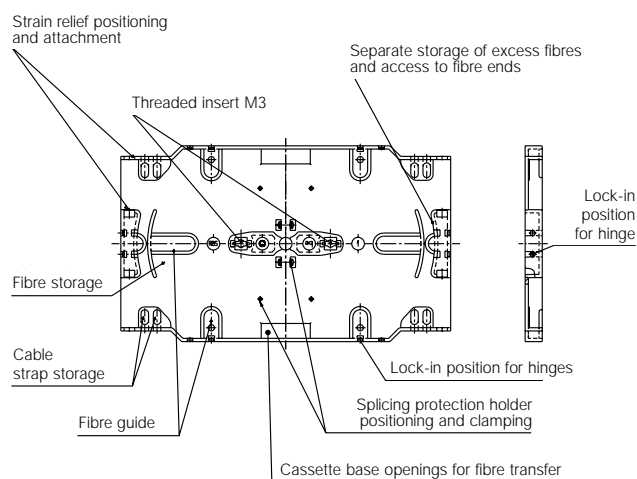
### 2.4.2 3M™ DIN Splicing Cassettes

#### Description

3M™ FO splicing cassettes manufactured to DIN standards



Splicing cassette conforming to DIN 47662 and Telecom standards for up to 12 splice connections. Numerous retaining options for FO bundled fibres and single fibres.



#### Type/Order text

#### Ref.-No.



##### FO Splicing cassette

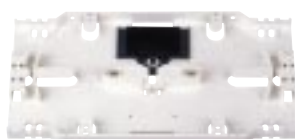
including strain relief & cable management

Dimensions: 155 x 92 x 8 mm (HxWxD)

Colour: RAL 9001 (cream white),

PU: 10 units

29026-500 31



##### FO Splicing cassette

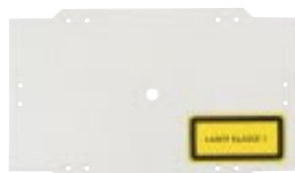
splice protective holder for 12 crimp splice protectors and cable management included

Dimensions: 155 x 92 x 8 mm (HxWxD)

Colour: RAL 9001 (cream white),

PU: 30 units

29026-500 30



##### Lid

for splicing cassette,

Dimensions: 155 x 92 x 2 mm (HxWxD)

Colour: RAL 9001 (cream white)

**Packaging: 10 units**

**Packaging: 50 units**

29025-503 31

29025-503 30



##### Hinge

to connect splicing cassette and lid.

We recommend two hinges per connection.

Colour: red, PU: 20 units

40027-512 00



##### Strain relief

for 12 fibres with 0.9 mm Ø and 1.1 mm coating.

PU: 50 units

29031-000 30

## 2.4 Accessories

### 2.4.3 3M™ Splice Protectors, Holders and Caps

#### Type/Order text

#### Ref.-No.

#### 3M™ Splice Accessories



**FO splicing protection holder, crimp**  
PU: 10 units  
for 12x crimp splice protectors

05-760-08000



**FO crimp splice protector**  
PU: 150 units

05-760-08100



**FO splicing protection holder, shrink**  
PU: 10 units, for 6x shrink splicing protectors

05-760-11900



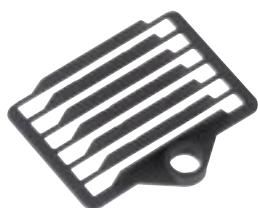
**FO shrink splice protector, 60 mm**  
PU: 100 units

05-760-12000



**FO shrink splice protector, 45 mm**  
PU: 100 units

05-760-12100



**FO splicing protection holder Fibrlok**  
PU: 20 units, for 6x Fibrlok

05-760-13200

**Blind plug for sealing unused openings in front panels.**



**ST blind plug**  
black, PU: 100 units

03-790-03200



**SC simplex blind plug**  
black, PU: 100 units

03-790-03100



**SC duplex blind plug**  
black, PU: 100 units

03-790-03300

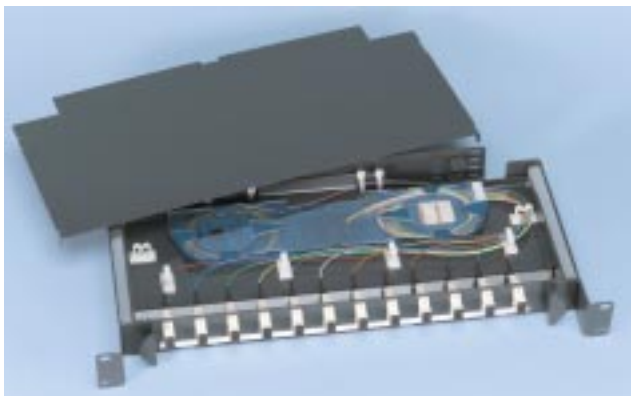
## 2.5 Subracks

### 2.5.1 3M™ BCCO II 19"

#### Description

#### 3M™ BCCO II - Slide mounted optical patch panel

##### 3M BCCO Range



BCCO, the reference in slide-mounted 19" optical patch panels. Generation II is designed to offer further functionality with the same high quality approach

- New slides for perfect panel/rack body assembly
- TOP Cassette with fibre management zone to separate unsheathed fibres from the pigtails
- Compact: 24 connections on only 1U
- Shallow depth allowing back-to-back mounting in standard 600 x 600 frames
- Specific 19" and ETSI models
- Anti-rodent device on both cable entries as standard

##### Concept

###### Body

Single piece for 19" or ETSI frame  
Left or right cable entry  
Attachment system for four 8mm dia. cables or one 18 mm dia. cable on each side  
Anti-rodent device on each cable entry.

###### Slides

Anodized aluminum profiles, greased for perfect panel/rack body adjustment

###### Panel

Single piece assembly with integrated connection strip.  
Fittings:  
2 TOP cassettes with double, articulated fibre management (4 for the 36- and 48-fibre versions)  
Cassette equipped to take 12 fusion-type splices with heat-shrink sleeve protection.  
Connection strip with label and two handles for opening.

##### Other Supplies and Accessories

Click-in cover  
Two corrugated conduits to guide the fibres from the cables to the cassettes  
Mounting kit ( screws, washers, captive nuts)  
Instruction sheet  
The panel is delivered fully assembled, with the cassettes in place

##### Materials / Protection

Body, panel, cover: Steel  
Paint: Epoxy powder  
Color: Anthracite (RAL 7016)  
Cassette & grommets: Thermoplastic

##### Pre-loaded

Our BCCO II, Proptic, CPO, MODF and CROS heads can be factory preloaded.

##### Capacity / Dimensions (mm)

| Model  | Capacity       | Height | Width | Depth | Slide Distance |
|--------|----------------|--------|-------|-------|----------------|
| 1U 19" | 0 to 24 fibres | 1U     | 19"   | 240   | 40             |
| 2U 19" | 0 to 48 fibres | 2U     | 19"   | 240   | 40             |



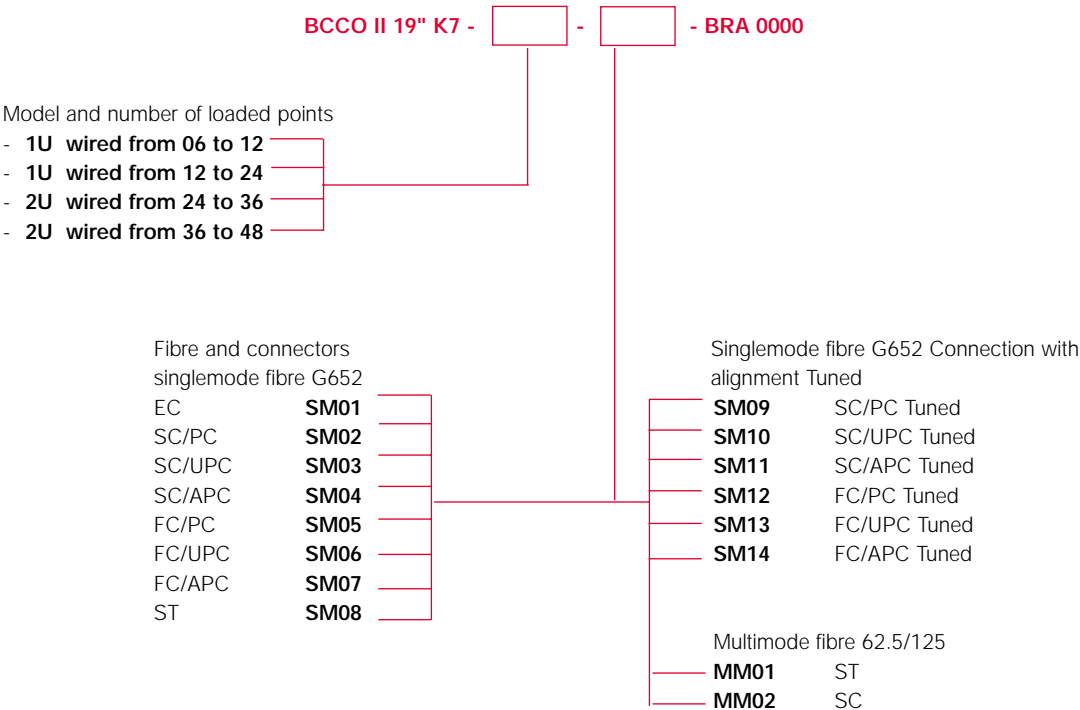
2.5 Subracks

2.5.1 3M™ BCCO II 19"

Description

3M™ BCCO II 19" Range

BCCO II 19" Panels with loaded cassettes



On request: singlemode fibre G655, multi-mode fibre 50/125, other connectors and special layouts.

Ordering Example:  
BCCO II 19" K7 - 1U 06 - SM04 BRA 0000

Range:  
BCCO II panel for 19" mounting with splicing cassettes.

Loaded: 1U panel designed for 12 fibres and half loaded (6 connections)

Connection and fibre: sleeveless SC/APC connector mounted on standard singlemode fibre (G652)

Packing:  
1U Panel for 19":  
Cardboard carton 550 x 250 x 60 mm. Weight 4 kg  
2U Panel for 19":  
Cardboard carton 550 x 250 x 100 mm. Weight 5 kg

## 2.5 Subracks

### 2.5.1 3M™ BCCO II 19"

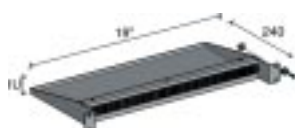
#### Type/Order text

#### Ref.-No.

### 3M™ BCCO II 19" Accessories / Panels without Pre-wiring

Storage racks and shelf, Splicing racks, Cable panels without pre-wiring

Racks for storing surplus jumper lengths



#### BCCO II 19", 1U Storage shelf

N461617A

Storing surplus jumper length  
Front panel with guide. Dim. 19" x 1U x 240 mm.  
Anthracite grey (RAL 7016)



#### BCCO II 19", 1U Standard storage rack

N461572A

To be fixed under the cable panel  
Sliding shelf for better accessibility  
Front panel with rubber guide to support the jumpers. Dim. 19" x 1U x 240 mm.  
Anthracite grey (RAL 7016)

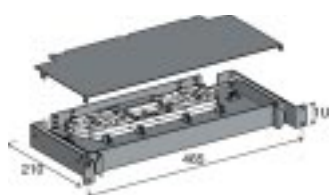


#### BCCO II 19", 1U Rack for managing surplus length

N461571A

To be fixed under the cable panel  
Sliding shelf for better accessibility  
Side channel for surplus length enabling the panel to be opened for further work without having to disconnect the jumpers from the front panel. Front panel with rubber guide to support the jumpers. Dim. 19" x 1U x 240 mm.  
Anthracite grey (RAL 7016)

#### Splicing Racks



#### BCCO II 19", 1U Rack for managing 24 splices

N461596A

The splicing rack is a cable panel with a solid front panel.  
It is equipped with the same fittings as the panel.  
In the 1U version, it takes 2 TOP cassettes  
Dim. 19" x 1U x 240 mm.  
Anthracite grey (RAL 7016)

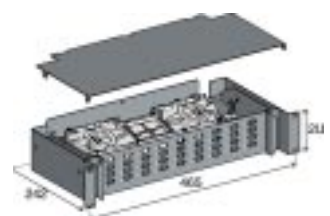
#### BCCO II 19", 2U Rack for managing 48 splices

BCCO II

N461560A

2U Version: 4 TOP cassettes  
Dim. 19" x 2U x 240 mm.  
Anthracite grey (RAL 7016)

#### BCCO II 19" Cable panels with Cassettes and Slides without pre-loading



1U for 12 ST or FC

N461580A

1U for 12 SC, E2000 or EC

N461592A

1U for 24 ST or FC

N461529A

1U for 24 SC, E2000 or EC

N461554A

2U for 36 ST or FC

N461559A

2U for 36 SC, E2000 or EC

N461593A

2U for 48 ST or FC

N461582A

2U for 48 SC, E2000 or EC

N461555A

#### Packing:

1U panel for 19":

Cardboard carton 550 x 250 x 60 mm. Weight 4 kg

2U panel for 19":

Cardboard carton 550 x 250 x 100 mm. Weight 5 kg

2

Fibre Interconnect Solutions

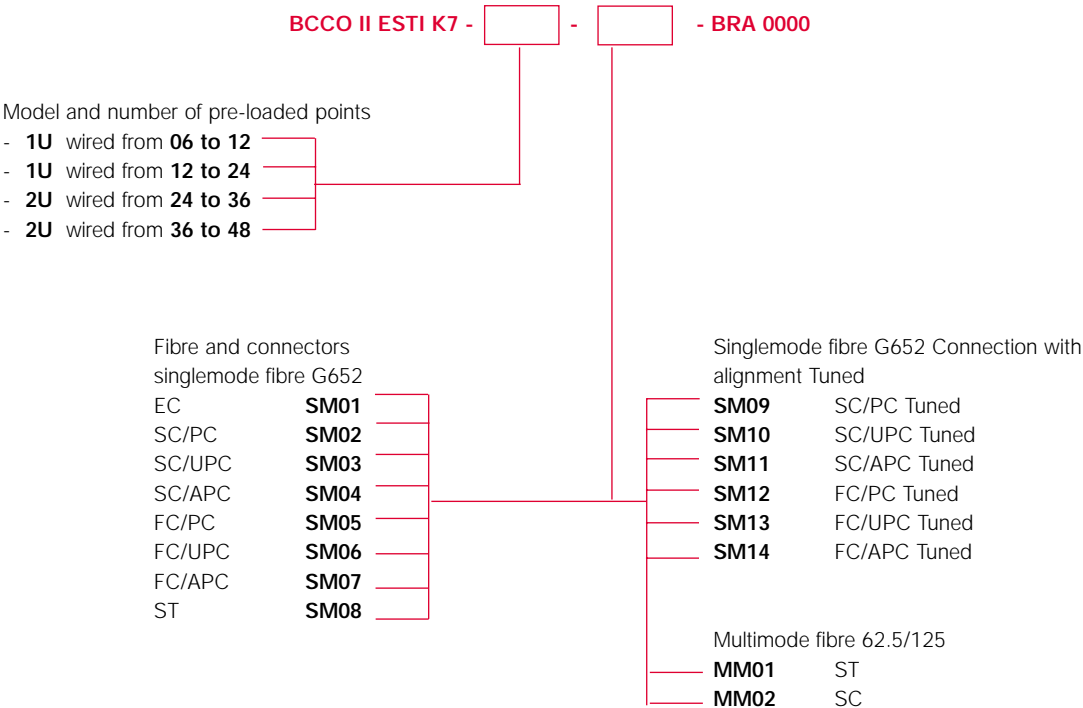
2.5 Subracks

2.5.2 3M™ BCCO II ETSI

Description

3M™ BCCO II ETSI 19" Range

BCCO II 19" Panels with loaded cassettes



On request: singlemode fibre G655, multi-mode fibre 50/125, other connectors and special layouts.

Ordering Example:  
BCCO II ETSI K7 - 1U 06 - SM04 BRA 0000

Range: BCCO II panel for ETSI mounting with splicing cassettes.

Pre-loaded: 1U panel designed for 12 fibres and half pre-loaded (6 connections)  
Connection and fibre: Sleeveless SC/APC connector mounted on standard singlemode fibre (G652)

Packing:  
1U panel for ETSI:  
Cardboard carton 560 x 250 x 60 mm. Weight 4,5 kg  
  
2U panel for ETSI:  
Cardboard carton 560 x 250 x 110 mm. Weight 5,5 kg


## 2.5 Subracks


### 2.5.2 3M™ BCCO II ETSI


#### Type/Order text

#### Ref.-No.


#### 3M™ BCCO II ETSI Accessories / Panels without Pre-loading

|   |  |                 |
|---|--|-----------------|
| <b>Storage Racks</b><br> | <b>Storage racks and shelf, Splicing racks,<br/>Cable panels without pre-loading</b>   |                 |
|   | <b>BCCO II ETSI, 1U Standard storage rack</b><br>To be fixed under the cable panel<br>Sliding shelf for better accessibility<br>Front panel with rubber guide to support the jumpers. Dim. ETSI x 1U x 240 mm.<br>Anthracite grey (RAL 7016) | <b>N461574A</b> |

|   |   |                 |
|---|---|-----------------|
|  | <b>BCCO II ETSI, 1U Rack with surplus length management</b><br>To be fixed under the cable panel<br>Sliding shelf for better accessibility<br>Side channel for surplus length enabling the panel to be opened for further work without having to disconnect the jumpers from the front panel.<br>Front panel with rubber guide to support the jumpers<br>Dim. ETSI x 1U x 240 mm.<br>Anthracite grey (RAL 7016) | <b>N461573A</b> |
|---|---|-----------------|

|  |  |                 |
|--|--|-----------------|
| <b>Splicing Racks</b><br> | <b>BCCO II ETSI, 1U Rack for managing 24 splices</b><br>The splicing rack is a cable panel with a solid front panel. It is equipped with the same fittings as the panel. In the 1U version, it takes 2 TOP cassettes<br>Dim. ETSI x 1U x 240 mm.<br>Anthracite grey (RAL 7016) | <b>N461597A</b> |
|  | <b>BCCO II ETSI, 2U Rack for managing 48 splices</b><br>2U Version: 4 TOP cassettes<br>Dim. ETSI x 2U x 240 mm.<br>Anthracite grey (RAL 7016)  | <b>N461598A</b> |

#### BCCO II ETSI Cable Panels with Cassettes and Slides without Pre-loading

|   |                                  |                 |
|---|----------------------------------|-----------------|
|  | <b>1U for 24 ST or FC</b>        | <b>N461594A</b> |
|   | <b>1U for 24 SC, E2000 or EC</b> | <b>N461530A</b> |
|   | <b>2U for 48 ST or FC</b>        | <b>N461595A</b> |
|   | <b>2U for 48 SC, E2000 or EC</b> | <b>N461570A</b> |

#### Packing:

1U panel for ETSI:

Cardboard carton 560 x 250 x 60 mm. Weight 4,5 kg

2U panel for ETSI:

Cardboard carton 560 x 250 x 110 mm. Weight 5,5 kg

## 2.5 Subracks

### 2.5.3 3M™ 19" Patch Panel, 1U

#### Description

#### 3M™ Patch Panel, 1U

FO 19" Patch Panle (1U) for up to 48 splice connections in four splice cassettes, DIN 47662-compliant.



**Housing:** Robust sheet steel housing with 2 openings for cable entry from the sides and the rear. Standard cable retention with cable management. The use of PG glands is possible.

**Colour:** RAL7032 (pebble grey)

**Patch Panle:** Organised storage of incoming or outgoing fibre pig-tails. Fixed stop for pullout to prevent unintended removal drawer.

**Front panels:** Front panels with printed port numbers for FO connections.

#### Type/Order text

#### Ref.-No.



#### FO 19" Patch Panle (1U), empty

Empty Patch Panle with integral front panel.

|                             |                |
|-----------------------------|----------------|
| FO Patch Panle 12 ST        | DE-0100-0954-1 |
| FO Patch Panle 24 ST        | DE-0100-0955-8 |
| FO Patch Panle 6 SC duplex  | DE-0100-1225-5 |
| FO Patch Panle 12 SC duplex | DE-0100-0957-4 |
| FO Patch Panle 24 SC duplex | DE-0100-1319-6 |

Dimensions: 44 x 483 x 250 mm (HxWxD)

Colour: RAL 7032 (pebble grey),

PU: 1 unit

Delivery:

- FO 19" Patch Panle (1 HU), empty
- Cable management
- Attachment materials for 19" racks

Prefabricated Patch Panle with FO Couplings and Pigtails installed. Fibre ends splice-ready and colourcoded. Excess pigtail lengths stored in splice cassettes.

#### Contents:

- FO 19" Patch Panle (1 HU) with connections and pigtails installed
- 1 to 4 FO splice cassettes with lid
- Splice protection holder and strain relief
- Various cable straps
- Attachment materials for 19" rack

#### Dimensions:

44 x 483 x 250 mm (HxWxD)

Colour: RAL 7032

PU: 1 unit

#### FO 19" Patch Panle (1U), prefabricated

##### Multimode, 50/125µm

|                                   |                |
|-----------------------------------|----------------|
| FO Patch Panle 12 ST              | DE-0100-0684-4 |
| FO Patch Panle 24 ST              | DE-0100-0686-9 |
| FO Patch Panle 6 SC duplex/12 ST  | DE-0100-1392-3 |
| FO Patch Panle 12 SC duplex/24 ST | DE-0100-0688-5 |
| FO Patch Panle 24 SC duplex/48 ST | DE-0100-1393-1 |

##### Multimode, 62.5/125µm

|                                   |                |
|-----------------------------------|----------------|
| FO Patch Panle 12 ST              | DE-0100-0685-1 |
| FO Patch Panle 24 ST              | DE-0100-0687-7 |
| FO Patch Panle 6 SC duplex/12 ST  | DE-0100-1394-9 |
| FO Patch Panle 12 SC duplex/24 ST | DE-0100-0689-3 |
| FO Patch Panle 24 SC duplex/48 ST | DE-0100-1395-6 |

## 2.6 Distribution Boxes

### 2.6.1 3M™ VKA 2/GF

#### Description

#### 3M™ VKA 2/GF

The VKA 2/GF optical fibre distribution box is specifically designed as an interior transfer or termination point for optical fibre runs. It is well-suited to environments where space is limited and cost effective solution is required.

The VKA 2/GF houses two FO splicing cassettes which can hold up to 24 splice connections. With the addition of a connector mounting plate (optional) the boxes can also be used as patch distribution frame.

If hybrid cables are used, the modular design of the VKA 2/GF makes it possible for either two 10 pair or one 20 pair copper connector blocks (Quante™ SID™-CD) to be accommodated.

Protection rating: IP 40 (DIN 40050)

#### Highlights

- Splice or patch distribution frame for 24 splice connections (2 FO splicing cassettes)
- FO connector mounting plates for 12 connectors E2000/SC, ST/FC or 6 connectors SC duplex
- accommodates hybrid cables using copper connector blocks, either 2x10 pair or 1x20 pair (SID-CD). Overvoltage protection can be used
- Lockable
- Remote monitoring via lid contact

#### Type/Order text

#### Ref.-No.



#### VKA 2/GF for 24 splice connections

Dimensions (HxWxD): 330 x 200 x 100 mm

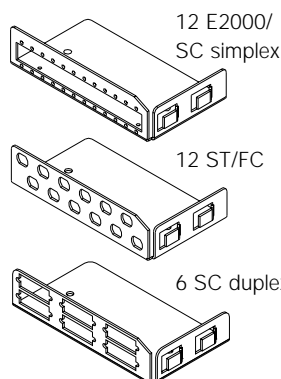
Weight: approx. 2.1 kg;

PU: 1 unit

#### Contents:

- Base plate with earth terminal and attachment for copper connector block
- Cassette tray for FO splicing cassettes
- 2 FO splicing cassettes with splice protection holder
- Housing lid with snap closure
- Cable management, assembly instructions

52-303-00030



#### FO connector mounting plates

|                     |              |
|---------------------|--------------|
| 12 E2000/SC simplex | 52138-019 30 |
| 12 ST/FC            | 52138-018 30 |
| 6 SC duplex         | 52138-016 30 |

#### Lock kits

|                  |              |
|------------------|--------------|
| VKA lock kit Q2  | 52096-523 00 |
| VKA lock kit Q3  | 52096-521 00 |
| VKA lock kit Q15 | 52096-526 00 |



#### VKA-Monitoring switch

Lid contact only useable in combination with lock kit

52096-519 00

## 2.6 Distribution Boxes

### 2.6.2 3M™ VKA 2/GF-EFM

#### Description

#### 3M™ VKA 2/GF-EFM with single fibre management

The VKA 2/GF-EFM serves as a final distribution or splice distribution frame in optical fibre networks and is capable of accommodating up to 12 splice connections in six FO splicing cassettes.

A feature of the VKA 2/GF-EFM is that it provides the opportunity for both single and multiple fibre management. This type of fibre management enables the storage of the splice for a connection to be separate from all other fibres. Ideally, two fibres will be stored in one splicing cassette. Using this method to manage the fibres, existing fibre connections will not be affected, even during later installation or service work.

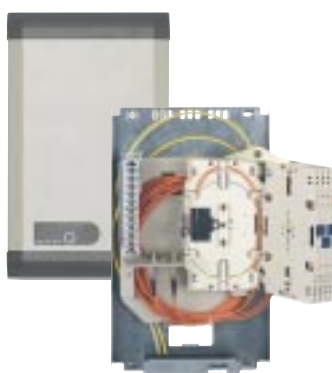
By using different connector mounting plates, the VKA 2/GF-EFM can be used as a patch distribution frame. It is possible to install a 10 pair copper connector block (Quante™ SID™-CT) for use with hybrid cables.

#### Highlights

- Single-fibre management for up to 12 splicing connections (24 fibres)
- FO cassette stack, completely removable
- Separate cable guide levels for incoming and outgoing sides
- Connector holders for SC, ST or FC connections
- Copper connector block for hybrid cables
- Lockable
- Remote monitoring via lid contact
- Utilises the same design as the VKA distribution frame

#### Type/Order text

#### Ref.-No.



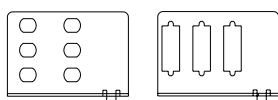
#### VKA 2/GF-EFM for 12 splice connections

Protection rating: IP 40 (DIN 40050)  
Dimensions (H x W x D): 330 x 200 x 100 mm  
Weight: approx. 2.1 kg;  
PU: 1 unit

#### Contents:

- Base plate with earth terminal and attachment for copper connector block
- Cassette stack with 6 FO splicing cassettes, hinges and cassette lids included
- Unlocking tools
- Cable management
- Assembly instructions

52-303-00000



#### FO connector mounting plates

holders 6 ST/FC

52138-009 30

3 SC duplex

52138-011 30

Housing closures

#### Lock kits

VKA lock kit Q2

52096-523 00

VKA lock kit Q3

52096-521 00

VKA lock kit Q15

52096-526 00



#### VKA-Monitoring switch

Lid contact only useable in combination with lock kit

52096-519 00

## 2.6 Distribution Boxes

### 2.6.3 3M™ VKA 4/GF, 3M™ VKA 8/GF

#### Description

#### 3M™ VKA 4/GF, 3M™ VKA 8/GF

VKA 4/GF and VKA 8/GF are optical fibre distribution frames capable of housing upto 48 and 96 splice connections in either four or eight FO splicing cassettes, respectively. These capacities can be further expanded to 72 or 144 splice connections by the addition of a further 2 or 4 splicing cassettes. In these cases it will not be possible to install a FO connector mounting plate.

Using optional connector mounting plates, the two splice distribution frames can be converted to patch distribution frames.

The VKA 4/GF can be equipped with one, the VKA 8/GF with two connector mounting plates. For the use of hybrid cables (with copper leads), there is a provision for the installation of 10 pair copper connector blocks (SID-CT).

#### Highlights

- **Capacity as:**  
Patch distribution frame, 48 (VKA 4/GF) or 96 (VKA 8/GF) splice connections  
Splice distribution frame, 72 (VKA 4/GF) or 144 (VKA 8/GF) splice connections
- Connector mounting plates for SC, E2000, FC or SC connections
- Copper termination for hybrid cables possible with overvoltage protection
- Remote monitoring via lid contact

#### Type/Order text

#### Ref.-No.



**VKA 4/GF for 48 splice connections**

**52-303-00100**

**VKA 8/GF for 96 splice connections**

**52-303-00200**

Protecting rating: IP 40 (DIN 40050)  
Dimensions (HxWxD) : 330x330x125 mm, 550x330x125 mm  
Weight: approx. 2.8 / 4.9 kg;  
PU: 1 unit

#### Contents:

- Base plate with earth terminal and attachment materials for copper connector blocks
- Cassette tray for FO splicing cassettes
- 4 or 8 splicing cassettes with splice protection holder
- 1 or 2 splicing cassette lids
- Plastic cable inlets and clamping
- Housing lid with snap closure
- Cable management
- Assembly instructions



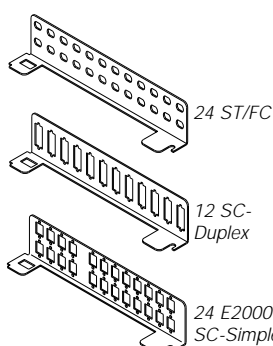
#### FO connector holders

**24 ST/FC** 52138-010 30

**12 SC duplex** 52138-012 30

**24 E2000 / SC simplex** 52138-013 30

Installation above the FO splicing cassettes



#### Lock kits

**VKA lock kit Q2** 52096-523 00

**VKA lock kit Q3** 52096-521 00

**VKA lock kit Q15** 52096-526 00

#### VKA-Monitoring switch

**52096-519 00**

Lid contact only useable in combination with lock kit





## 2.6 Distribution Boxes

### 2.6.4 3M™ Box 2552SA

#### Description

#### 3M™ 2552SA Series Wall & Rack Mount Fibre Optic Patch Panel

The 3M 2552SA Box brings excellent affordable fibre management with rack mount capability to your wall mounted building entrance and LAN applications. The Box series offers efficient use of space as well as functionality and rugged durability.

The attractive, low profile design makes the Box acceptable for installation anywhere in your facility. The unique sliding lid of the Box provides easy access to all couplings. The panels are available with different coupling plates and will accommodate FC flanged couplings, ST simplex & duplex, FC "D" mount couplings, SC duplex and the Volition™ VF-45™ Socket. The Box is constructed from flame retardant material.

Fibres can either be directly terminated or spliced to pigtails using Fibrlok® or fusion splicing. Boxes are part of 3M's large family of fibre optic products including connectors, couplings cable assemblies splices and more.



#### Highlights

- Assortment of coupling plates will handle all major connector styles
- Flexible housing allows left, right, bottom or top cable entry

#### Type/Order text



#### 2552SA

Dimensions (HxWxD) :210 x 160 x 65 mm  
Weight: approx. 0,5 kg/ea.  
MOQ: 10 units

with:  
ST simplex or duplex /  
FC-"D" Mount /  
SC duplex plate up to 12x fibres

#### Ref.-No.

2552SA

## 2.7 Terminal Outlet

### 2.7.1 3M™ Fibre Optic Wall Outlet

#### Description

#### Ref.-No.

#### 3M™ Fibre Optic Wall Outlet



##### Fibre Optic Wall Outlet

Outlet for wall- or channel mounting onto standard mounting plate (EN 60670/DIN 49073-TA-M2H1).

Dimensions (H x W x D): 80 x 80 x 41 mm

Colour: Office grey RAL 7032

PU: 5 each

##### for 4x ST-Simplex

FIPTOST-80

##### Contents:

- 1 ea Wall Outlet
- 1 ea Front Panel for 4x ST simplex couplings
- 1 ea DIN/EN Mounting Plate

##### for 2x SC-Duplex

FIPTOSC-80

- 1 ea Wall Outlet
- 1 ea Front Panel for 2x SC-duplex couplings
- 2 ea SC-Duplex Couplings
- 2 ea SC-Duplex fixed Dustcovers
- 1 ea DIN/EN Mounting Plate

##### Fibre Optic 30° Wall Outlet

Outlet for channel mounting onto standard mounting plate (EN 60670/DIN 49073-TA-M2H1).

Dimensions (H x W x D): 70 x 70 x 16,5 mm

Colour: Office white RAL 9010

PU: 10 each



##### for 2x ST-Simplex

FIPTOST-70

##### Contents:

- 1 ea Central Mounting Frame (50 x 50mm) for 2x ST-simplex couplings, incl. labelling zone (7 x 44mm)
- 1 ea Mainframe 70 x 70 mm
- 1 ea DIN/EN Mounting Plate



##### for 2x SC-Duplex

FIPTOSC-70

##### Contents:

- 1 ea Central Mounting Frame (50x50mm) for 2x SC-duplex couplings, incl. labelling zone (7 x 44mm)
- 1 ea Mainframe 70 x 70 mm
- 1 ea DIN/EN Mounting Plate
- Coupling mounting screws

